

**PARLIAMENT**

**RESOLVED** that Parliament, in accordance with section 5 of the *Land Acquisition Act*, Cap. 228, approve the compulsory acquisition by the Crown of the parcel of land situate at Gemswick in the parish of Saint Philip in this Island, more particularly described in the *Schedule* hereto for the purpose of recreational use by the public.

**APPROVED** by the House of Assembly this \_\_\_\_\_ day of \_\_\_\_\_, Two thousand and fourteen.

**Speaker**

**APPROVED** by the Senate this \_\_\_\_\_ day of \_\_\_\_\_, Two thousand and fourteen.

**President**

**SCHEDULE**

**ALL THAT** land the property of S.P. Musson Son & Company Limited, situate at Gemswick in the parish of Saint Philip in this Island containing by admeasurement 9,578.1 square metres or thereabouts Abutting and Bounding on lands now or formerly of S.P. Musson Son & Company Limited on a public road which leads to Highway N in one direction and to Eastwinds in the other direction on a right of way of 7.92 metres wide and on a right of way 4.88 metres wide and on lands now or formerly of S.P. Musson Son & Company Limited or however else the same may abut and bound as shown and delineated on a Plan certified on the 15<sup>th</sup> day of August, 2013 by Samuel N. Taylor, Land Surveyor and recorded in the Lands and Surveys Department on the 20<sup>th</sup> day of August, 2013 as Plan No. 810/2013.

**ADDENDUM**

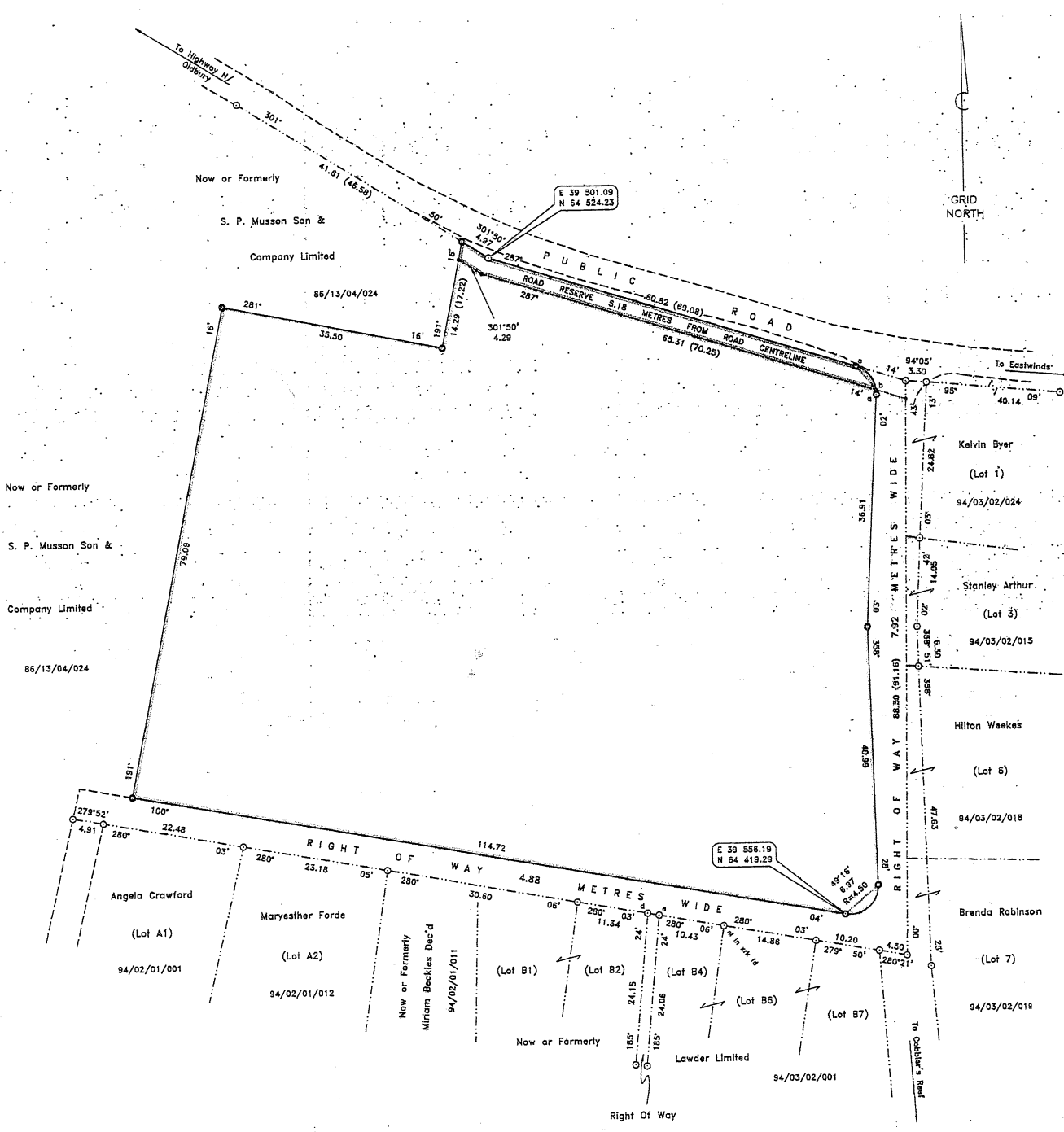
On the 31<sup>st</sup> day of May, 2012, the Cabinet agreed to the acquisition of land situate at Gemswick in the parish of Saint Philip for the purpose of recreational use by the public.

In accordance with section 5 of the *Land Acquisition Act*, Cap. 228, the approval of Parliament is now sought for the compulsory acquisition of the parcel of land more particularly described in the *Schedule* hereto, in order that the public purpose set out in this Resolution may be effected and that the Crown may acquire an indefeasible title to the said parcel of land.

LANDS AND SURVEYS DEPARTMENT

Survey Order 1/2013  
Correspondence No: 0301/334 A

Parish of: St. Philip  
Locality: GEMSWICK



**Barbados**

PLAN OF LAND (bordered green and brown)

at GEMSWICK, ST. PHILIP

containing Land... 9390.0 sq. m. (green)  
Road Reserve... 188.1 sq. m. (brown)  
Total... 9578.1 sq. m.

surveyed for MINISTRY OF HOUSING, LANDS & RURAL DEVELOPMENT

certified 15th August, 2013

SCALE 1:500

Distances are in metres  
Bearings are referred to Grid North  
derived from D. L. S. Control T2046 & T2047.

- denotes iron found unless otherwise stated
- denotes iron put
- denotes computed point

Line	Azimuth	Distance	Radius
a-b	358° 38'	0.68	4.50
b-c	320° 44'	4.97	4.50
d-e	280° 14'	1.83	—

Land Tax #: Part of 86/13/04/024  
For Lands and Surveys Dept only

8/10/2013