

SCHEDULE

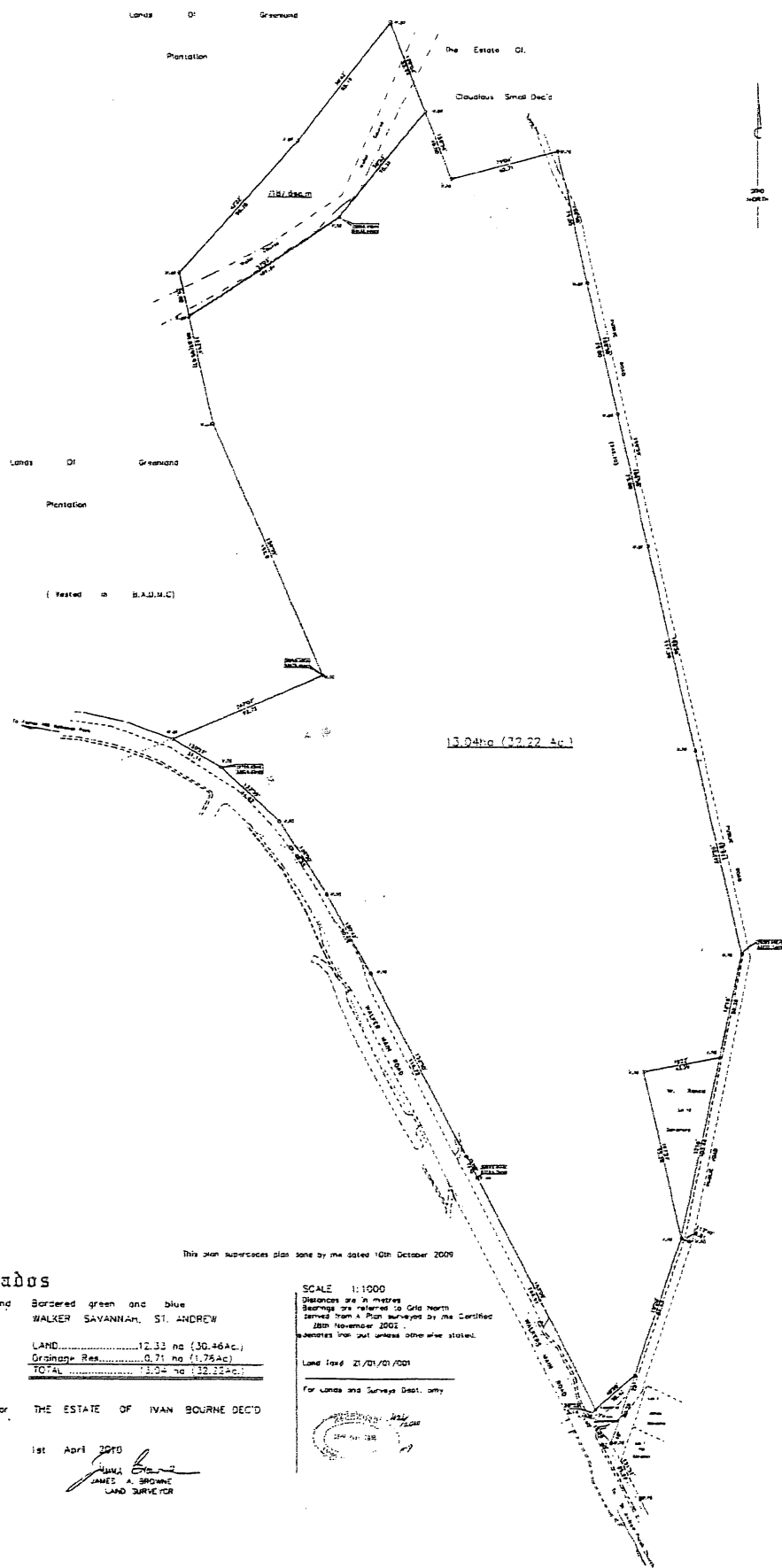
ALL THAT land situate at Walker Savannah, in the parish of Saint Andrew, (formerly called Walkers) and said to contain by estimation 13.63 hectares or thereabouts, (which represents a metric conversion from 34.07 acres) but found by subsequent survey made and certified on the 16th day of September, 1976 (to be part of a larger area containing by admeasurement 41.767 acres divided into lots at Greenland in the parish of Saint Andrew) and to contain by estimation 13.795 hectares which represents a metric conversion from 34.087 acres or thereabouts (inclusive of 0.238 hectares or 0.59 acres in road) and found by recent survey to contain by admeasurement 13.04 hectares, which area represents a metric conversion from 32.22 acres or thereabouts (inclusive of 0.71 hectares or 1.76 acres in drainage reserve) Abutting and Bounding on lands now or formerly of Greenland Plantation, on lands of the Estate of Claudias Small, deceased, on a public road which leads to Long Pond in one direction and to Walkers Main Road in the other direction, on lands now or late of Randal Sandiford, on lands now or formerly of the Barbados Government, on a public road known as Walkers Main Road that leads to the Saint Andrew Parish Church in one direction and to Farley Hill National Park in the other direction and on lands now or formerly of Greenland Plantation and vested in the Barbados Agricultural Development and Marketing Corporation or however else the same may abut and bound, as shown and delineated on a plan certified on the 1st day of April, 2010 by James A. Browne, Land Surveyor and recorded in the Lands and Surveys Department on the 6th day of April, 2010 as Plan No. 426/2010.

ADDENDUM

On the 5th day of July, 2012, the Cabinet agreed that the parcel of land situate at Walker Savannah in the parish of Saint Andrew should be vested in the National Housing Corporation for the public purpose of housing development.

The parcel of land, more particularly described in the *Schedule* hereto, was acquired by the Crown by private treaty and deed of conveyance dated the 21st day of June, 2010 between Carrol Claudine Bourne, Administratrix and Personal Representative of the Estate of Ivan Bourne (and the duly qualified Attorney on record for Grace Anita Anfossy, formerly Cumberbatch, and Valerie Angelique Hamblin, Executrices of the Estate of Ivan Bourne) and the Crown, and recorded in the Land Registry on the 19th day of July, 2010 as Deed No. 5142/2010.

In accordance with the provisions of section 5 of the *Crown Lands (Vesting and Disposal) Act*, Cap. 225 the approval of Parliament is now sought for the vesting in the National Housing Corporation of the parcel of land, more particularly described in the *Schedule* to this Resolution, for the public purpose of housing development.



This plan supersedes plans done by me dated 10th October 2009

Barbados

Plan of Land Bordered green and blue
 at WALKER SAVANNAH, ST. ANDREW

containing

LAND.....	12.33 ha (30.46Ac.)
Drainage Res.....	0.71 ha (1.75Ac)
TOTAL.....	13.04 ha (32.22Ac.)

surveyed for THE ESTATE OF IVAN BOURNE DEC'D

Certified 1st April 2010

James A. Browne
 JAMES A. BROWNE
 LAND SURVEYOR

SCALE 1:1000
 Distances are in metres
 Bearings are referred to Grid North
 taken from a Plan surveyed by me Certified
 28th November 2002
 (unless true) unless otherwise stated.

Land used 21/01/2001
 For Lands and Surveys Dept. only

