

PARLIAMENT

RESOLVED that Parliament in accordance with section 5 of the *Crown Lands (Vesting and Disposal) Act*, Cap. 225 approve the vesting in the National Housing Corporation of the parcel of land, the property of the Crown, situate at Cluffs in the parish of Saint Lucy in this Island and more particularly described in the *Schedule* hereto for the "Sites and Service Project".

APPROVED by the House of Assembly this day of ,
Two thousand and Eighteen.

SPEAKER

APPROVED by the Senate this day of ,
Two thousand and Eighteen.

PRESIDENT

SCHEDULE

ALL THAT land the property of the Crown situate at Cluffs in the parish of Saint Lucy in this Island containing by admeasurement 8,265.1 square metres or thereabouts Abutting and Bounding on lands now or late of Winifred Worrell on lands now or late of John Phillips on lands now or late of Troy Barker on lands now or late of Michael Clarke on the Lots 8, 7 and 6 on a right-of-way on the Lots 5, 3, 4, 2 and 1 situate in Cluffs Tenantry and on a verge which is part of a public road leading to Roaches in one direction and to St. Swithins in the other direction or however else the same may abut and bound as shown and delineated on a Plan certified on the 14th day of July, 2017 by Anderson R. Alleyne, Land Surveyor and recorded in the Lands and Surveys Department on the 14th day of July, 2017 as Plan No. 678/2017.

ADDENDUM

On the 23rd day of November, 2017, the Cabinet agreed to the vesting of 8,265.1 square metres of land situate at Cluffs in the parish of Saint Lucy in this Island in the National Housing Corporation for the Sites and Services Project.

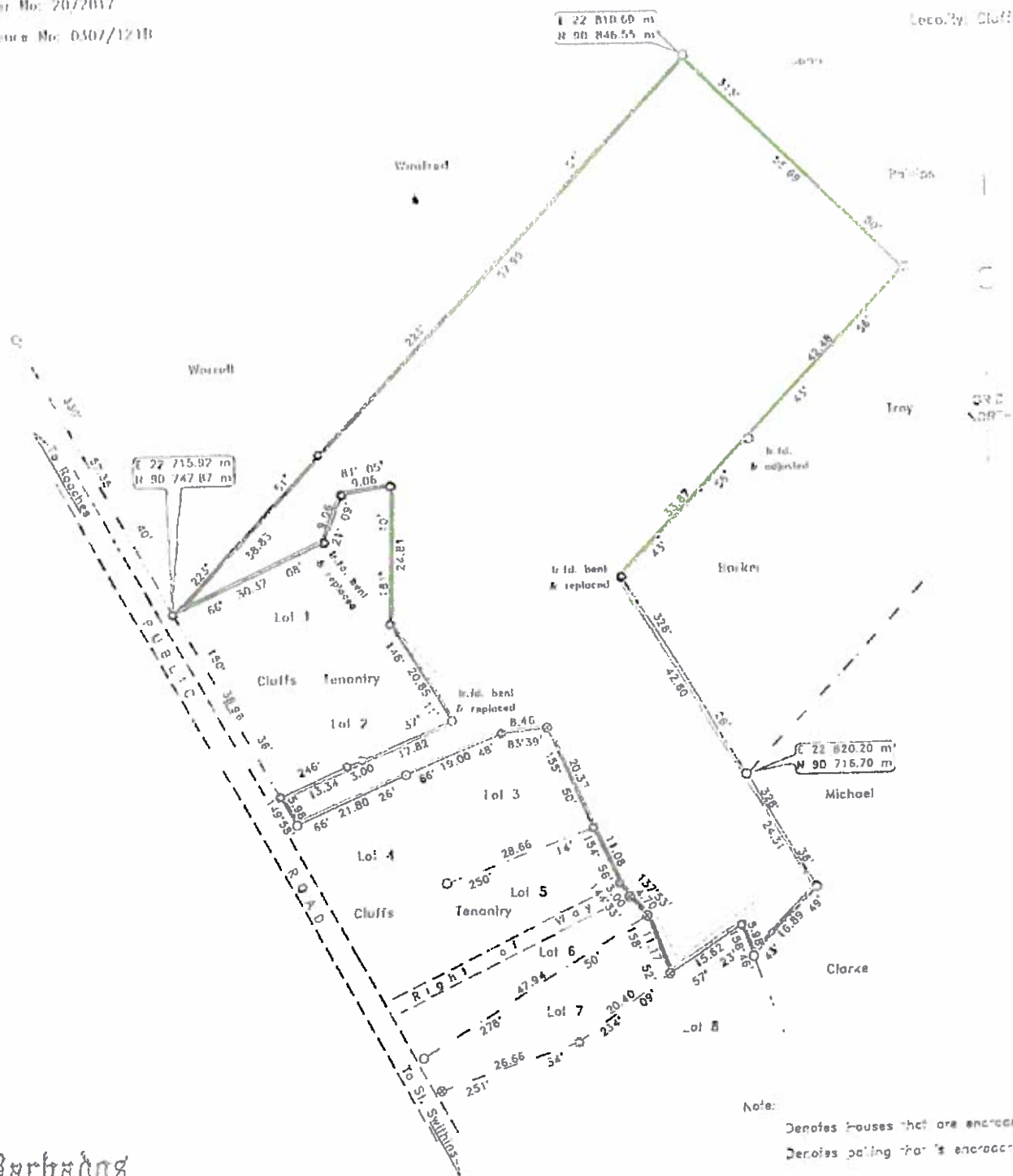
The parcel of land described in the *Schedule* is part of a larger parcel of land containing by admeasurement 1.965 hectares acquired by the Crown in accordance with section 5 of the *Land Acquisition Act*, Cap. 225 as published in the *Official Gazette* on the 28th day of March, 1991 as S.I. 1991 No. 28 for the public purpose of housing development.

A portion of the said 1.965 hectares of land was previously sub-divided into eighteen (18) Lots and sold to the tenants under the *Tenancies Freehold Purchase Act*, Cap. 239B.

In accordance with the provisions of section 5 of the *Crown Lands (Vesting and Disposal) Act*, Cap. 225, the approval of Parliament is now sought for the vesting in the National Housing Corporation of the parcel of land more particularly described in the *Schedule* to the Resolution.

Correspondence to: No. 0307/121B

LEOBY, Clive



Herbados

PLAN OF LAND

of	Cuffs, St. Lucy
containing	band... 6265: se. (green)

surveyed for Ministry of Housing, Lands
and Rural Development

certified 14th July, 2017

Anderson R. A. Payne
Land Surveyor

SCALE 1:800

Distances are in metres
Bearings are referred to Grid North
derived from D. L. S. control M20 & G25.

- denotes iron found unless otherwise stated
- denotes iron pit
- denotes a hand mine, otherwise stated
- denotes and or x pit
- denotes computed point

Land Tax 1/2 part of 04.02.02.010
For Lands and Surveys Dept only